



NOVA
ESTATE AGENTS



11 Gainsborough Court Stockingstone Road, Luton, LU2 7NQ

Nova are delighted to present this spacious, recently refurbished two bedroom apartment to rent, ideally located in the popular Round Green area of Luton.

Situated on the first floor, this modern and well maintained property offers bright and comfortable living throughout. Upon entering, you're welcomed by a light filled reception room, providing plenty of space for both relaxing and entertaining. The contemporary kitchen is fitted with modern appliances and offers ample storage and workspace.

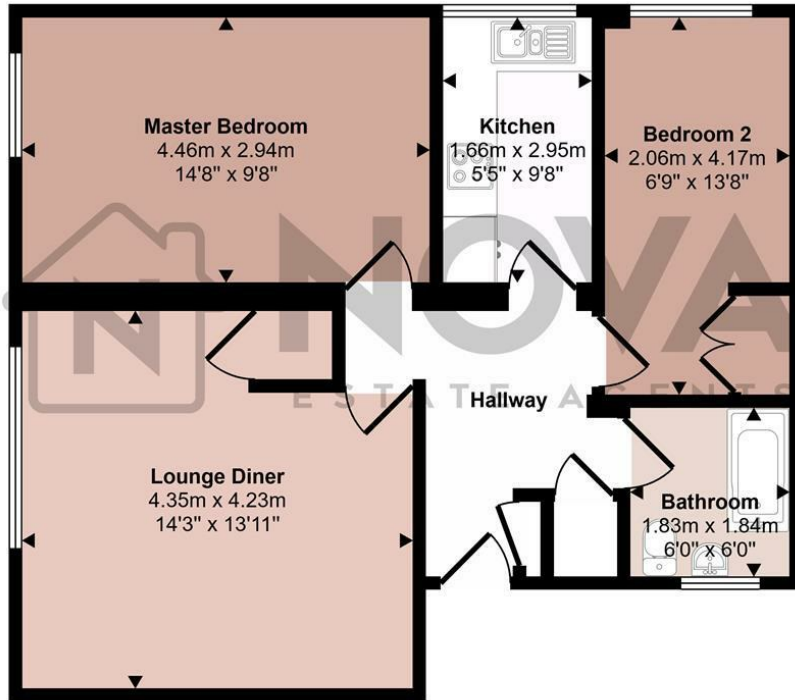
The apartment benefits from two generously sized double bedrooms, making it ideal for professionals, couples or small families. The layout is practical and well proportioned, creating a comfortable and inviting home environment.

Additional features include communal parking.

- Nova Estate Agents
- Press Play Button For 360° Walkaround Tour
- Large Two Bedroom Apartment
- Recently Refurbished
- Available Now!
- Suitable For Company Let
- Communal Parking
- Popular Round Green Location

£1,200 Per month

Approx Gross Internal Area
58 sq m / 626 sq ft



Floorplan

This floorplan is only for illustrative purposes and is not to scale. Measurements of rooms, doors, windows, and any items are approximate and no responsibility is taken for any error, omission or mis-statement. Icons of items such as bathroom suites are representations only and may not look like the real items. Made with Made Snappy 360.

Energy Efficiency Rating		Current	Potential
Very energy efficient - lower running costs			
(92 plus) A			
(81-91) B			
(69-80) C			76
(55-68) D			
(39-54) E		42	
(21-38) F			
(1-20) G			
Not energy efficient - higher running costs			
England & Wales		EU Directive 2002/91/EC	